

The background features several light gray line art sketches of furniture. In the top left, there's a sketch of a table with a rectangular top and four legs. In the middle left, a long table with a wide, flat top and several legs is shown. In the middle right, a chair with a high back and a seat is depicted. In the bottom right, a table with a rounded top and four legs is visible. The overall style is minimalist and architectural.

# Signatures + Standouts

ENWORK

**Wildly  
functional,  
always  
beautiful.**

At Enwork, we know that it's about more than just furniture. Our focus is on developing solutions that create inspiring and productive spaces. We push the limits of design and engineering. We thrive on innovation and doing things differently. That's why we built a culture centered around forward thinking. We anticipate needs, identify trends, and stay steps ahead of the curve. With rapid development and adaptive processes, we're always exploring and learning so our clients can optimize their spaces. That's why they come to Enwork. Because we know better than anyone how powerful a great idea can be.



← Ligouri Private Office

Private Office

## Cayman

Exceptional design, down to the last detail



A best-in-class modular collection that's specifiable by the inch, quick to install, and requires minimal tethering to the architectural wall. Front and side-access storage towers provide convenience and superior utility.



## Ligouri Private Office

Blending natural materials with modernist design



Hardwood and cast aluminum detailing beautifully integrate into a complete office solution, where unique details, like a levitating top and custom chamfered pulls, tell a tale of understated design.

## Rogue

Minimal in design, extensive in scope



Private Office

With height adjustability, limitless configurations, and the freedom to specify a range of materials, Rogue brings new energy into the private office.





← Ligouri Conference and Credenza

# Conference



**Foundation™ Tapered Drum**

Orderable with tops up to 96 inches on a single base



A modern showpiece that aligns with the latest trends in architectural design, boasting an extensive selection of sizes, materials, and power offerings.



**Expanse**

Excellence in design and engineering



Conference

An Enwork icon spanning 8–36 feet, supported by two angled steel bases alone.

**VOU**

The premier hybrid meeting solution



A broad series of V, O, and U-shaped tables specifically designed for in-person and virtual conferencing.

## Odyssey

Innovative forms inspired by ancient architecture



Molded fiberglass gracefully shifts from a square underside to a sleek rectangular profile. Tops reach up to eight feet on a single base or 36 feet on two bases.



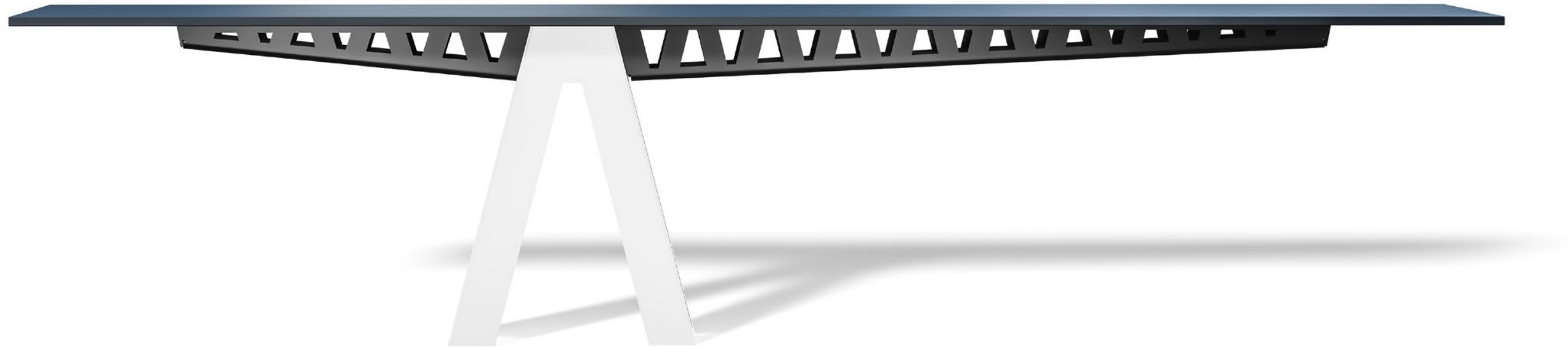
**Foundation™ Conference**  
America's favorite conference table collection



The go-to collection for formal and informal meeting spaces, featuring seamless technology management and a suite of coordinating storage solutions.

**Equilibrium™**

The perfect balance of form and function



Conference

A revolutionary design leveraging a single base to create the illusion of a floating surface up to 20 feet wide.



# Training



## Quantum

Our newest high-performance training table



A quantum leap in flip-top table innovation, featuring dense in-line nesting at just 5.5 inches, auto-locking casters, accessible bag hooks, and a wide single-handed flip mechanism.



**Zori®**  
Our most comprehensive product collection



The leading education and training resource for campuses and corporate facilities, providing 34 unique product types ranging from conference and training tables to lecterns and high-tech media solutions for learning environments.

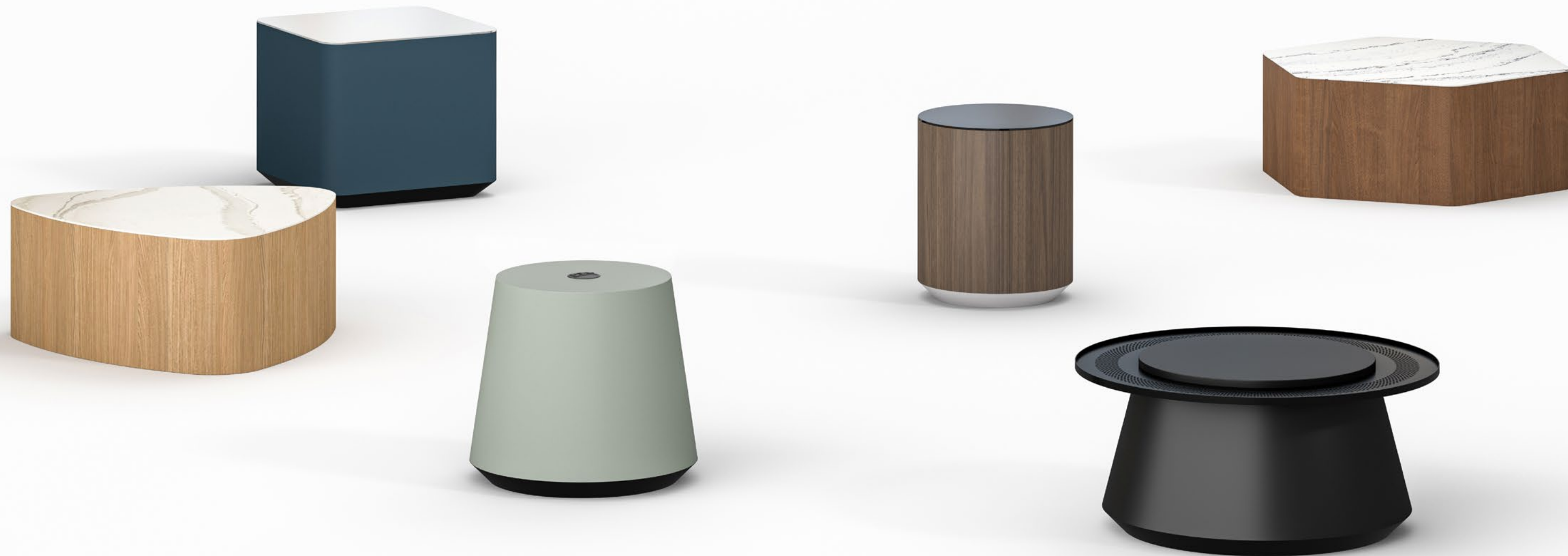


← Tangent Laptop Table + Ligouri Bench with Cushion

Occasional



**Oh Hey!**  
Dressed for the occasion



A variety of playful shapes and lounge table designs, complete with customizable accents and power placements to suit any interior aesthetic.

## Tangent

Modern, sleek, and expressive



A contemporary platform with a design-forward appeal – perfect for nesting or as a standalone accent piece. Curved steel legs create an optical illusion, appearing to touch and separate for a timeless aesthetic.



← Proxi Electric Base + Grid™

Benching



## Proxi + Ambition™

Height adjustability with robust power/data delivery



Proxi's three-stage electric base provides full ANSI-BIFMA adjustability and a programmable handset at an unbeatable price. Ambition beams serve as the backbone of open-plan productivity, seamlessly managing power and data for an entire 12-pack with just two supports.

## XTB4

Enabling healthy movement in any configuration



Inspires ergonomic wellness without sacrificing space. A variety of layouts are available, each offering linked height adjustability and completely integrated cable management.

HEADQUARTERS  
12900 Christopher Drive  
Lowell, MI 49331  
1.800.815.7251

SHOWROOM  
Merchandise Mart  
222 Merchandise Mart Plaza  
Suite 11-118  
Chicago, IL 60654

[enwork.com](https://enwork.com)  
©2024 Enwork

N